



American Concrete Industries

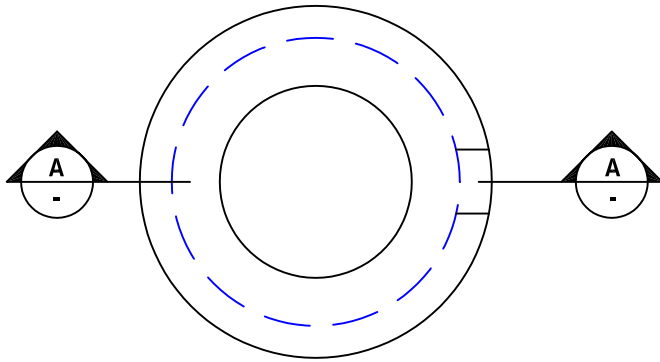
3'Ø CATCH BASIN SPEC. SHEET

CATALOG SECTION: COMMERCIAL.MANHOLE.3FT

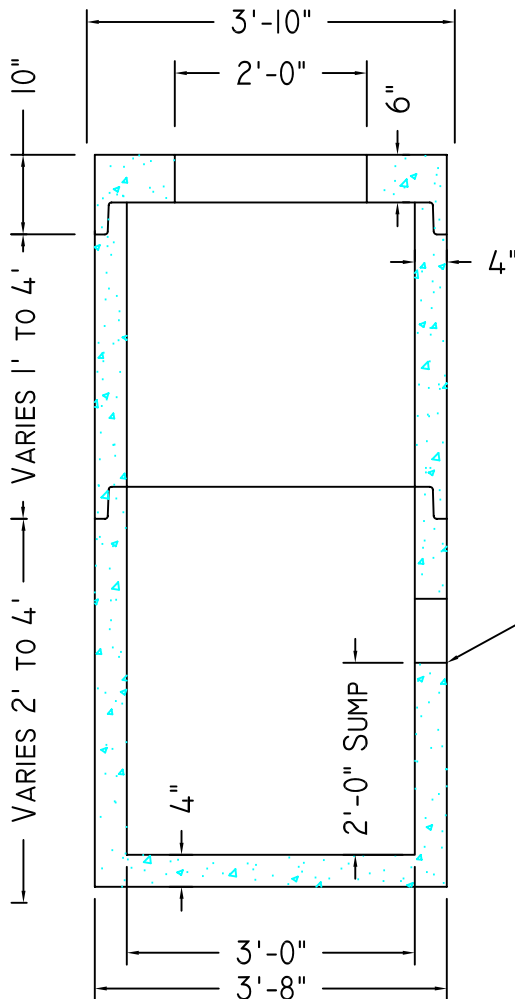
LAYOUT NAME: CATALOG VERTICAL

DESIGN NOTES:

- 1) 4000 PSI CONCRETE AT 28 DAYS.
- 2) DESIGNED FOR H-20 WHEEL LOADING.
- 3) CONFORMS TO ASTM C-478 AND M.D.O.T SPECIFICATIONS.
- 4) REINFORCED TO 0.12 IN.SQ./L.F.



3'Ø CATCH BASIN PLAN VIEW



SECTION "A" - "A"

	APPROX. WEIGHTS (LBS.)
FLAT TOP	1,001#
BARREL	515# V.F.
FLOOR	345#
GAL/VF	67.3 GAL/VF