



# American Concrete Industries

6' Ø MANHOLE SPECIFICATION SHEET

CATALOG SECTION: COMMERCIAL.MANHOLE.6FT

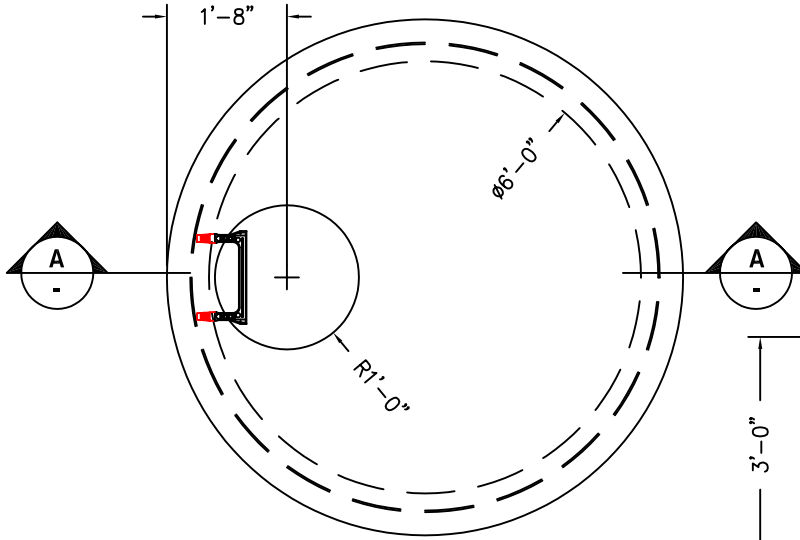
LAYOUT NAME: CATALOG VERTICAL

## GENERAL SPECIFICATIONS

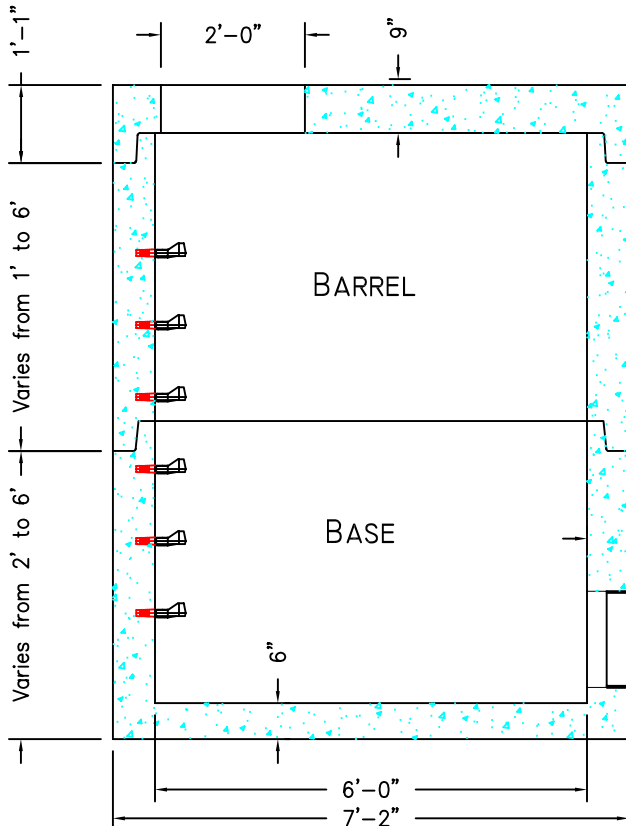
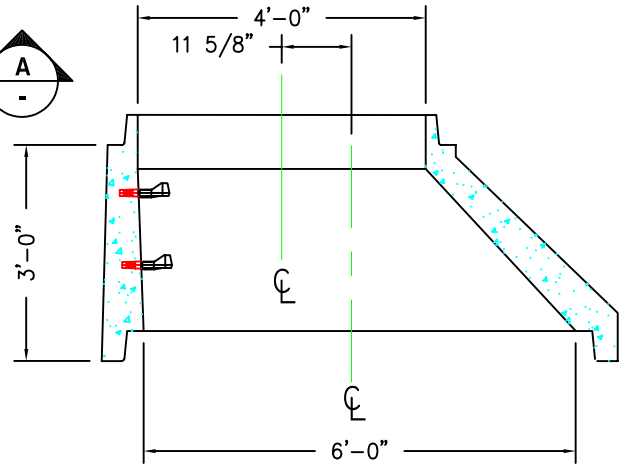
- 1) CONCRETE 5000 PSI AFTER 28 DAYS
- 2) DESIGNED FOR H-20 WHEEL LOADING
- 3) CONFORMS TO ASTM-C478 SPECIFICATIONS
- 4) REINFORCED TO 0.18 IN<sup>2</sup>/L.F
- 5) MANHOLE JOINTS SEALED W/ (2) STRIPS OF BUTYL RUBBER

## OPTIONS FOR MANHOLES

- EXTERIOR DAMPROOFING
- PLASTIC STEPS 12" O.C.



6' Ø MANHOLE PLAN VIEW



SECTION "A" - "A"

MANHOLE JOINTS SHOULD BE SEALED WITH (2) 1"Ø BUTYL RUBBER SEALANT STRIPS.

FLEXIBLE RUBBER SLEEVES FOR PIPE CONNECTIONS. FASTENED TO MANHOLE HOLE WITH STAINLESS STEEL LOCKING CLAMPS. ALL RUBBER SLEEVES ARE SUPPLIED WITH STAINLESS STEEL STRAPS FOR SEALING OVER THE PIPE.

APPROX. WEIGHTS (LBS.)	
FLAT TOP	4,425
BARREL	1,750 V.F.
FLOOR	2,049