



American Concrete Industries

8'φ Manhole w/ Flat-Top Cover

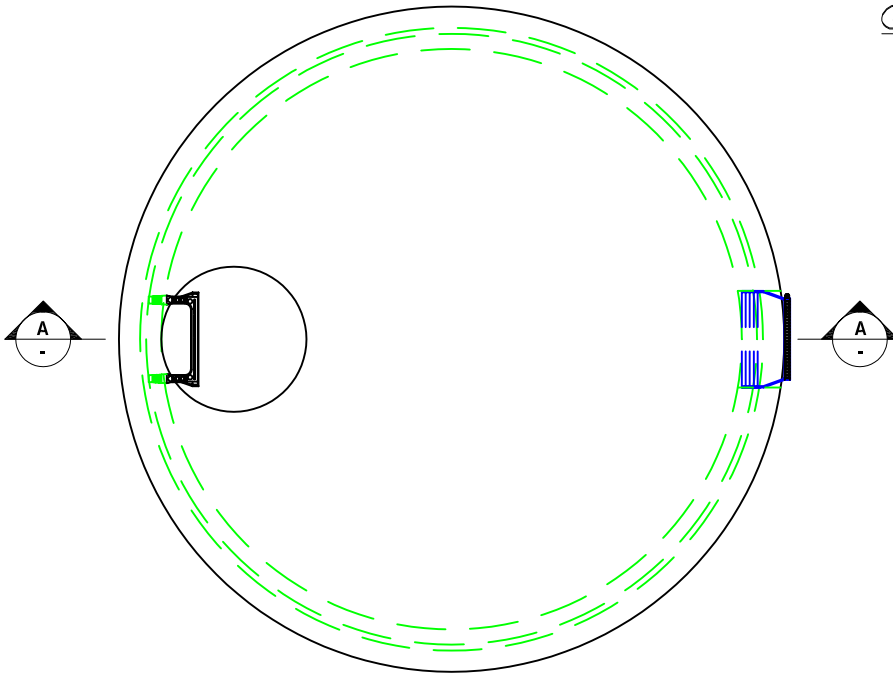
Catalog Section: commercial\manholes\8'
Layout Name: Catalog Vertical

General Specifications

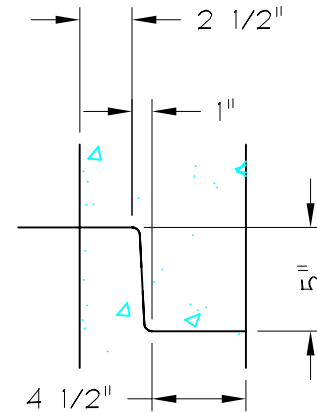
- 1) Concrete 5000 psi after 28 days
- 2) Designed for H-20 wheel loading
- 3) Conforms to ASTM-C478 specifications
- 4) Reinforced to 0.24 in²/lf
- 5) Manhole joints sealed w/(2) strips of butyl rubber

Options for Manholes

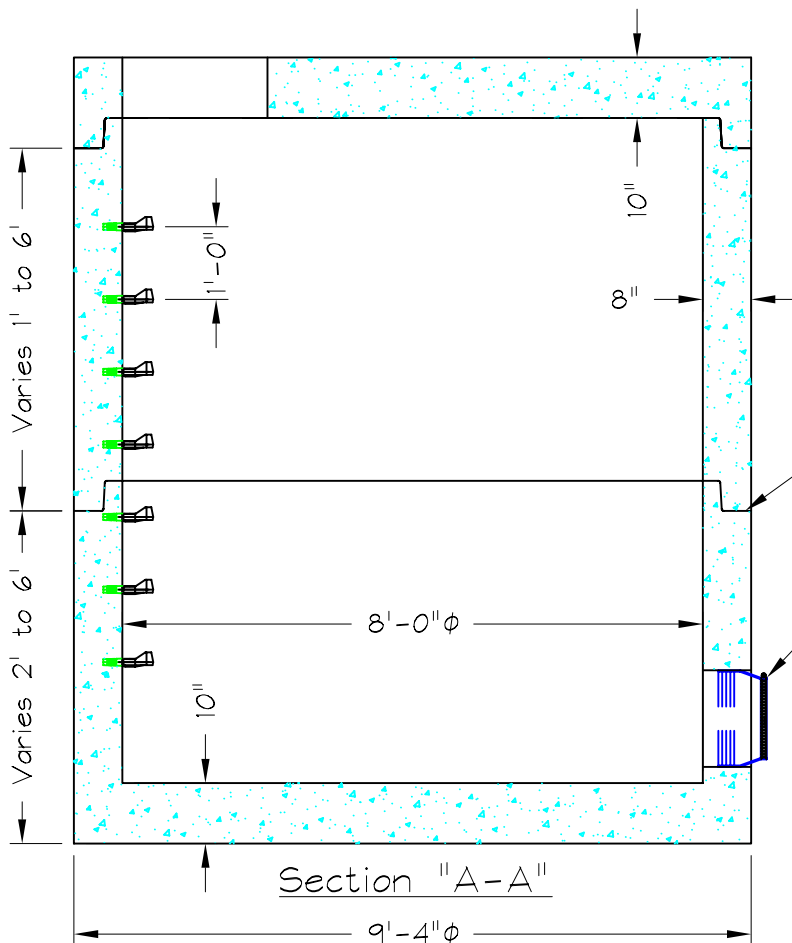
- Exterior Damproofing
- Plastic Steps 12" O.C.



8'φ Manhole Plan View



Joint Detail



Section "A-A"

Manhole joints should be sealed with (2) 1"φ butyl rubber sealant strips.

All rubber sleeves are supplied with stainless steel straps for sealing over the pipe.

8'φ MH	Approx. Weights
Flat Top	8,086#
Barrel	2,215#/VF
Base	6,074#
gal/ft	376 gal/ft

American Concrete Industries
1022 Minot Ave. Auburn, ME / 1717 Stillwater Ave. Veazie, ME
Tel: 207-784-1388 / Tel: 207-947-8334
Fax: 207-783-4039 / Fax: 207-947-3580

Drawing Name: 8ft_manhole_spec_sheet.dwg

Drawing Date: 06/10/2006

Latest Revision: 2.0 Date: 06/10/2006