

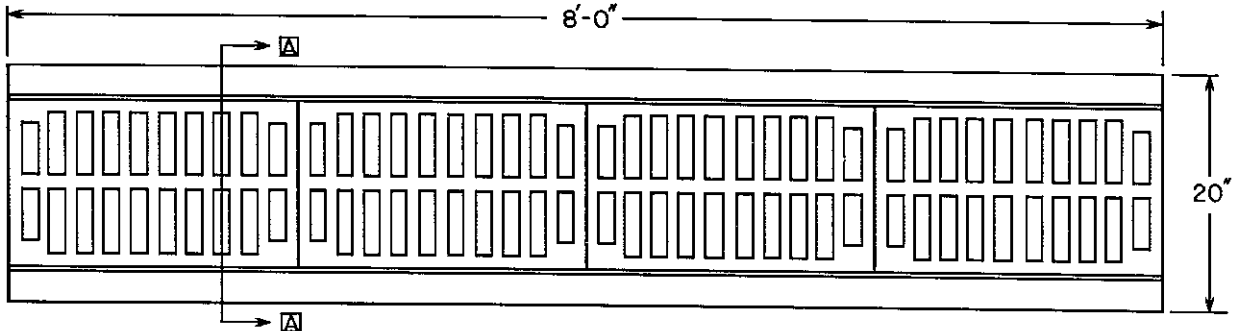


American Concrete Industries

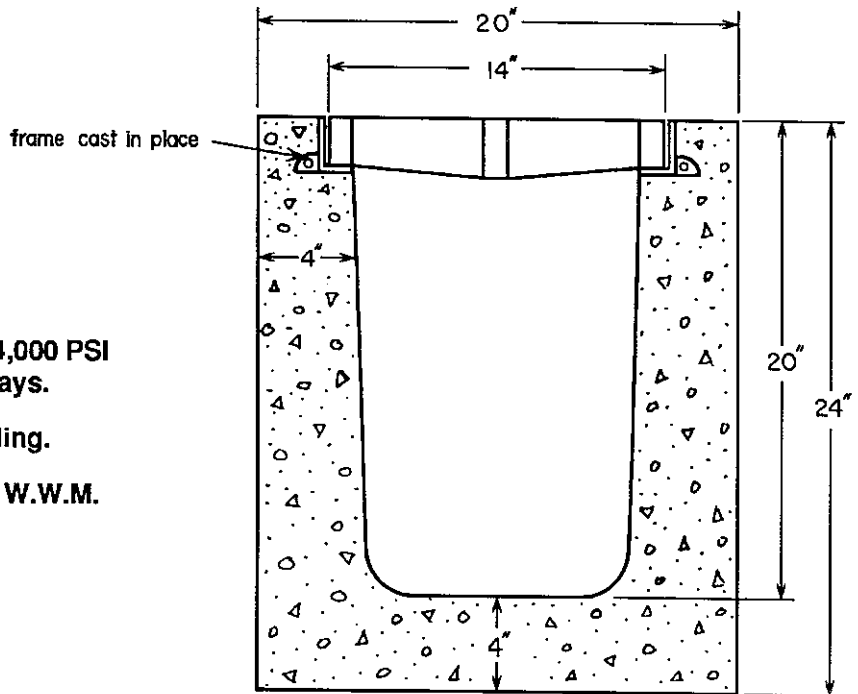
RFD #5, Box 100
Bangor, Maine 04401-9702
207 947-8334 1-800-432-7843

1022 Minot Ave.
Auburn, Maine 04210-3798
207 784-1388 1-800-427-8377

Drainage Trench



Plan View



Section AA

Design Notes:

1. All concrete has a minimum 4,000 PSI compressive strength at 28 days.
2. Designed for H-20 wheel loading.
3. Reinforced with 6" x 6" 10/10 W.W.M.
4. Grating: Steel or Cast Iron.