



American Concrete Industries

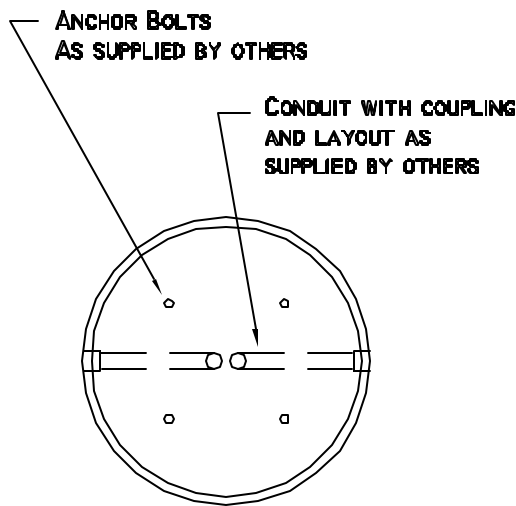
24" DIA. Light Pole Base

Catalog Section:

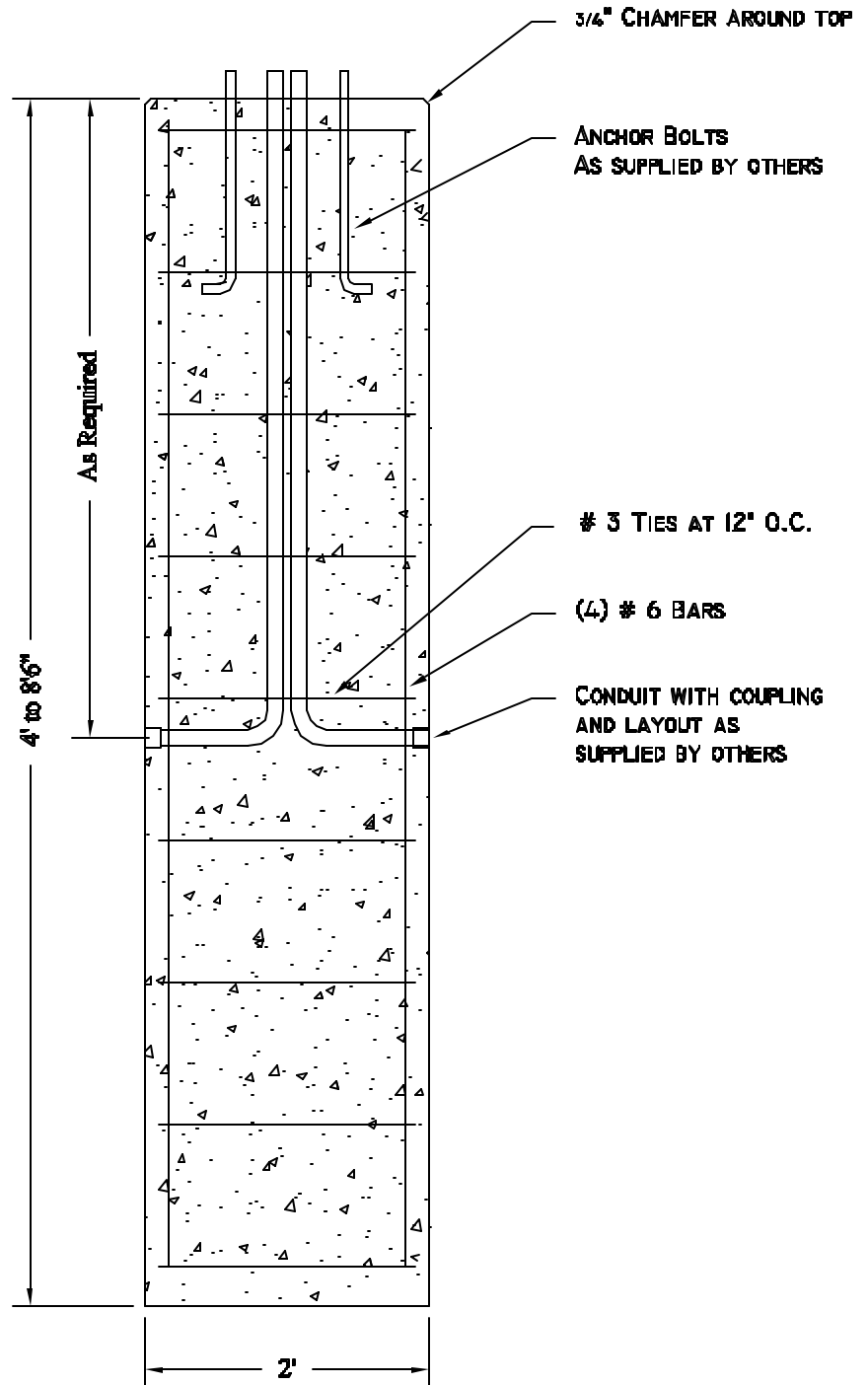
Layout Name:

GENERAL NOTES:

1. 4000 PSI CONCRETE AT 28 DAYS.
2. NATURAL GRAY CONCRETE, STEEL FORM FINISH.
- 3 CONDUIT, ANCHOR BOLTS AND BOLT TEMPLATE TO BE SUPPLIED BY OTHERS.
4. WEIGHT = 465 LBS. PER VERTICAL FOOT.



PLAN



TYPICAL ELEVATION