

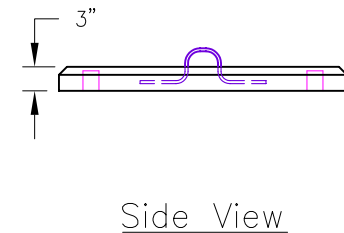
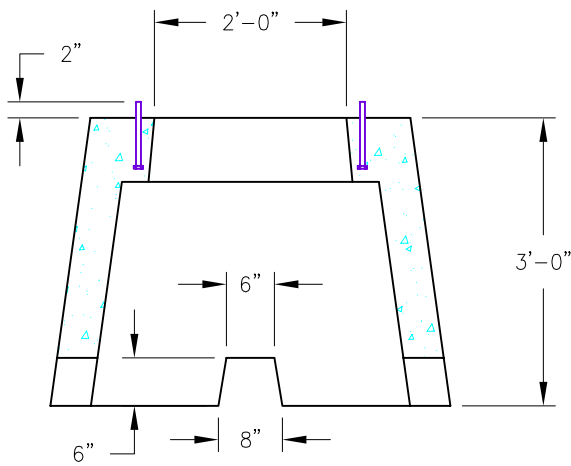
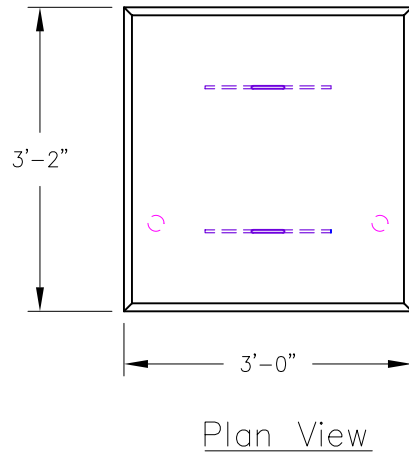
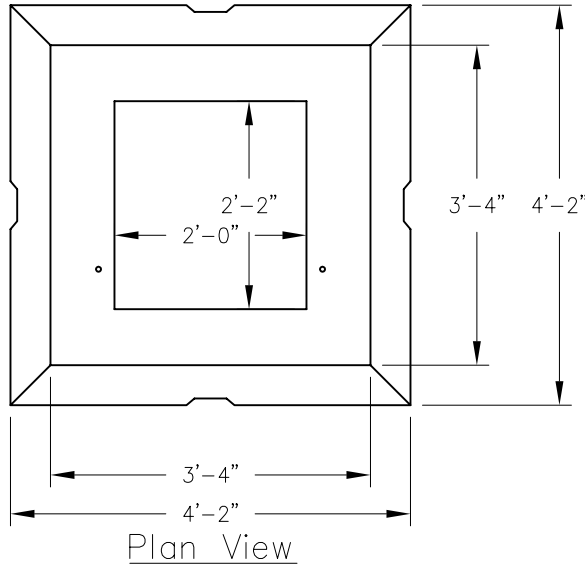
Single Phase Transformer Pad - CMP

Pad Item # 5735 - WT: 2,630 lbs.
 Cover Item # 5734 - WT: 350 lbs.

General Notes

Concrete Specifications:

- 1) 4000 psi after 28 days with 4%-6% air
- 2) Reinforcing is grade 60



Precast Concrete Cover

Single Phase Transformer Pad
 25 KVA to 167 KVA



American Concrete Industries

1022 Minot Ave. Auburn, ME / 1717 Stillwater Ave. Veazie, ME
 Tel: 207-784-1388 / Tel: 207-947-8334

Last Revised:
 01/06

PG. XXX