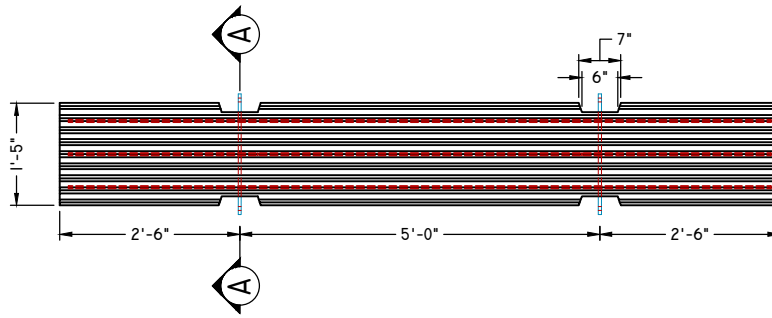
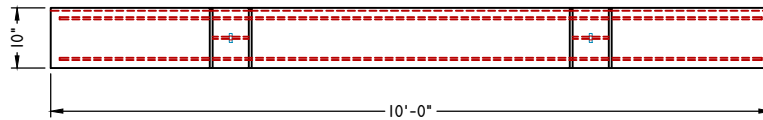




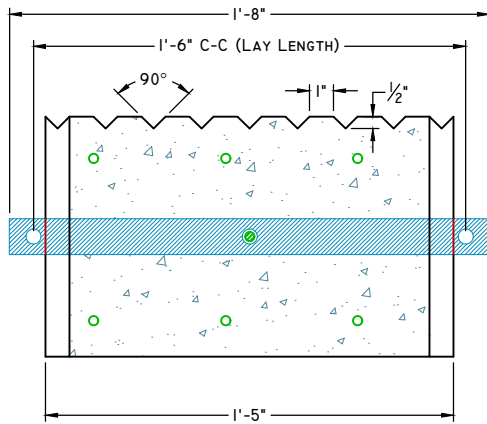
10'x17"x10" BOAT LAUNCH SLABS



PLAN VIEW



ELEVATION VIEW



SECTION A-A

SCALE: 1-1/2" = 1'-0"

SPECIFICATIONS:

1. CONCRETE:

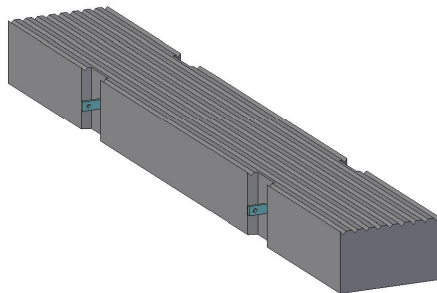
- A. COMPRESSIVE STRENGTH @ 28 DAYS, 5000 PSI
- B. AIR ENTRAINED: 5-6%
- C. GRADE 60 REBAR (6) #3 REBAR, EPOXY COATED
- D. CORROSION INHIBITOR ADMIX

2. TIE BARS

- A. STEEL TYPE: STAINLESS STEEL
- B. TIE HOLE 5/8" DIA.
- C. CONNECTION HARDWARE FURNISHED BY OTHERS

DESIGNED FOR USE IN SALT WATER APPLICATIONS

WEIGHT: 1,715 LBS



CONCEPTUAL VIEW

SCALE: NTS