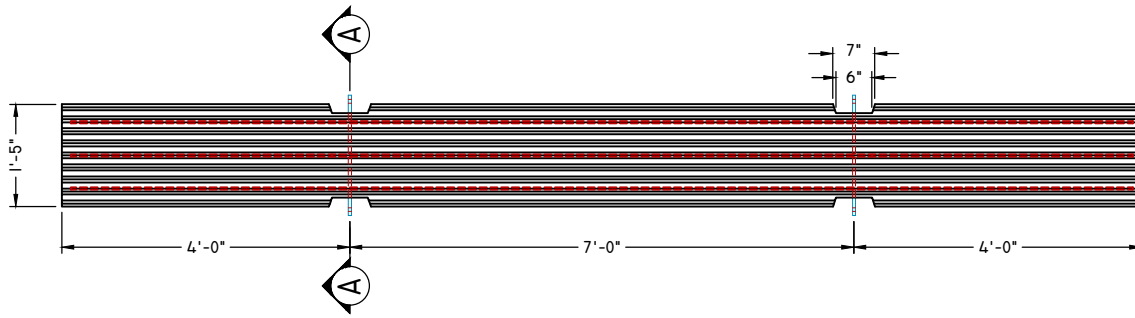




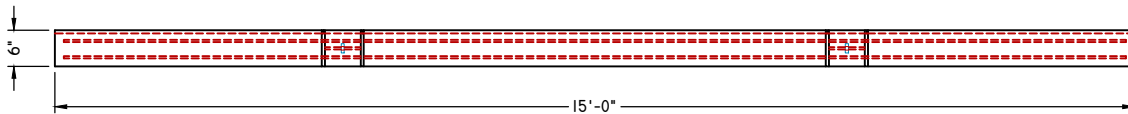
American Concrete Industries

WWW.AMERICANCONCRETE.COM
1717 STILLWATER AVE.
VEAZIE, ME. 04401
TEL: (207) 947-8334
FAX: (207) 947-3580

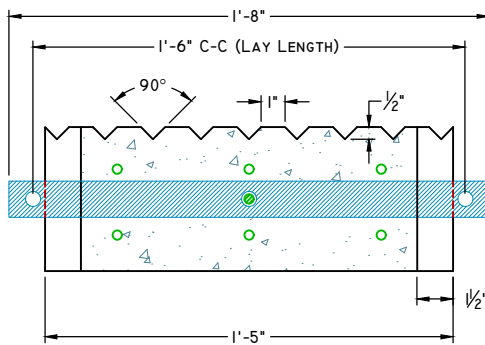
15'x17"x6" BOAT LAUNCH SLABS



PLAN VIEW

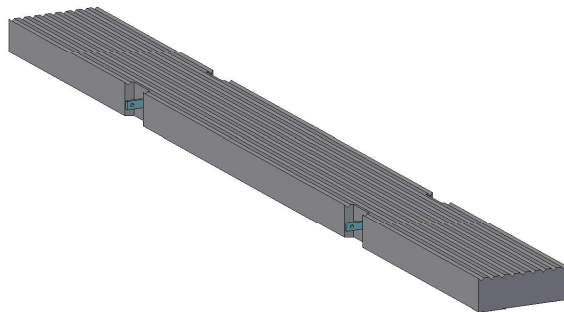


ELEVATION VIEW



SECTION A-A

SCALE: 1-1/2" = 1'-0"



CONCEPTUAL VIEW

SCALE: NTS

SPECIFICATIONS:

1. CONCRETE:

A. COMPRESSIVE STRENGTH @ 28 DAYS:

- 4000 PSI (TYP.)
- 5000 PSI (SALT WATER USE)

B. AIR ENTRAINED: 5-6%

C. GRADE 60 REBAR

- #3 REBAR (TYP.)
- #4 REBAR
- #5 REBAR
- EPOXY COATED (SALT WATER USE)

D. CORROSION INHIBITOR

- YES (SALT WATER USE)
- NO

2. TIE BARS

A. STEEL TYPE

- PLAIN (TYP.)
- GALVANIZED
- STAINLESS STEEL

B. TIE HOLE

- 5/8" DIA. (TYP.)
- 3/4" DIA.

C. CONNECTION HARDWARE FURNISHED BY OTHERS

WEIGHT: 1,540 LBS