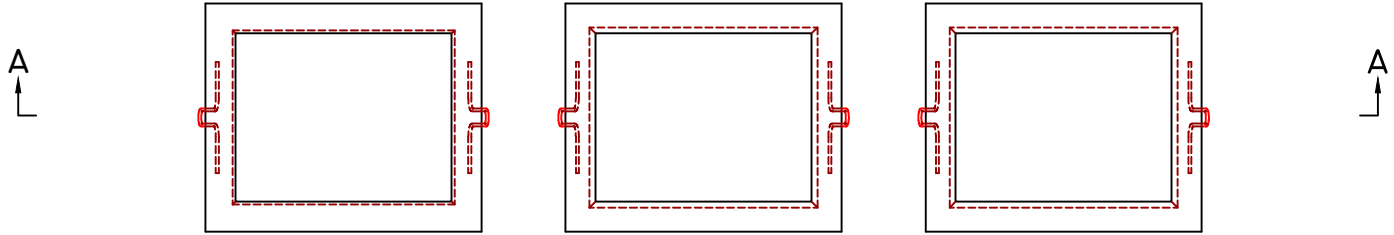
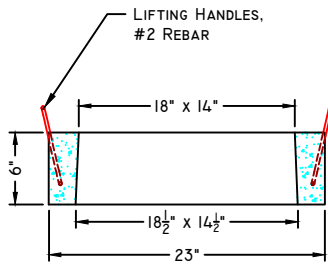




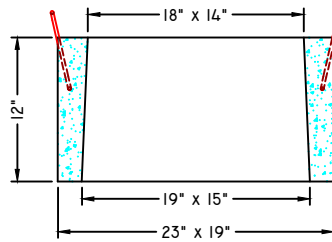
RECTANGULAR RISERS & COVER



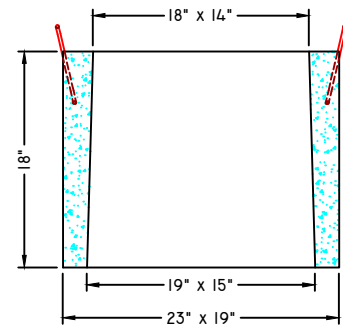
PLAN VIEW



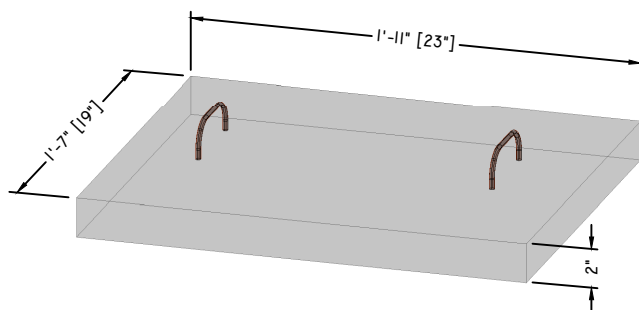
6" SECTION



12" SECTION

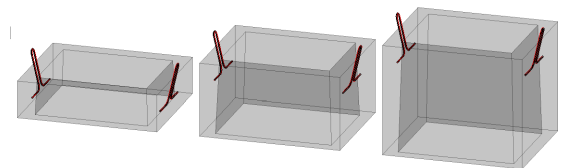


18" SECTION



COVER SECTION

SCALE: NTS



Manufacturing Notes

- 1.1. CONCRETE COMPRESSIVE STRENGTH: 4000PSI @ 28 DAYS
- 1.2. AIR ENTRAINMENT: 4-6%
- 1.3. FIBER REINFORCEMENT & GRADE 60 REINFORCEMENT
- 1.4. RECOMMEND JOINTS SEALED W/ BUTYL RUBBER JOINT SEALANT - EACH JOINT: ~6.4' SEALANT
- 1.5. RISERS DESIGNED TO KEEP EXISTING COVER IN PLACE

Physical Specifications:

6" Riser (#281010):	93 lbs
12" Riser (#281020):	176 lbs
18" Riser (#281030):	264 lbs
Cover (#281040):	76 lbs