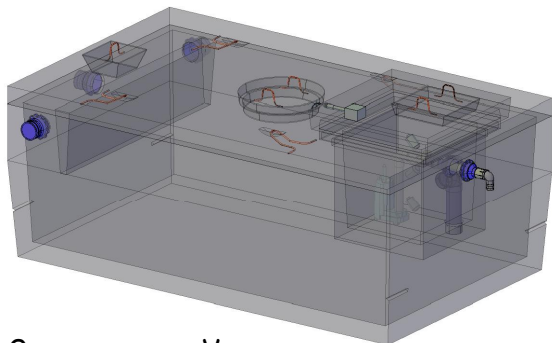
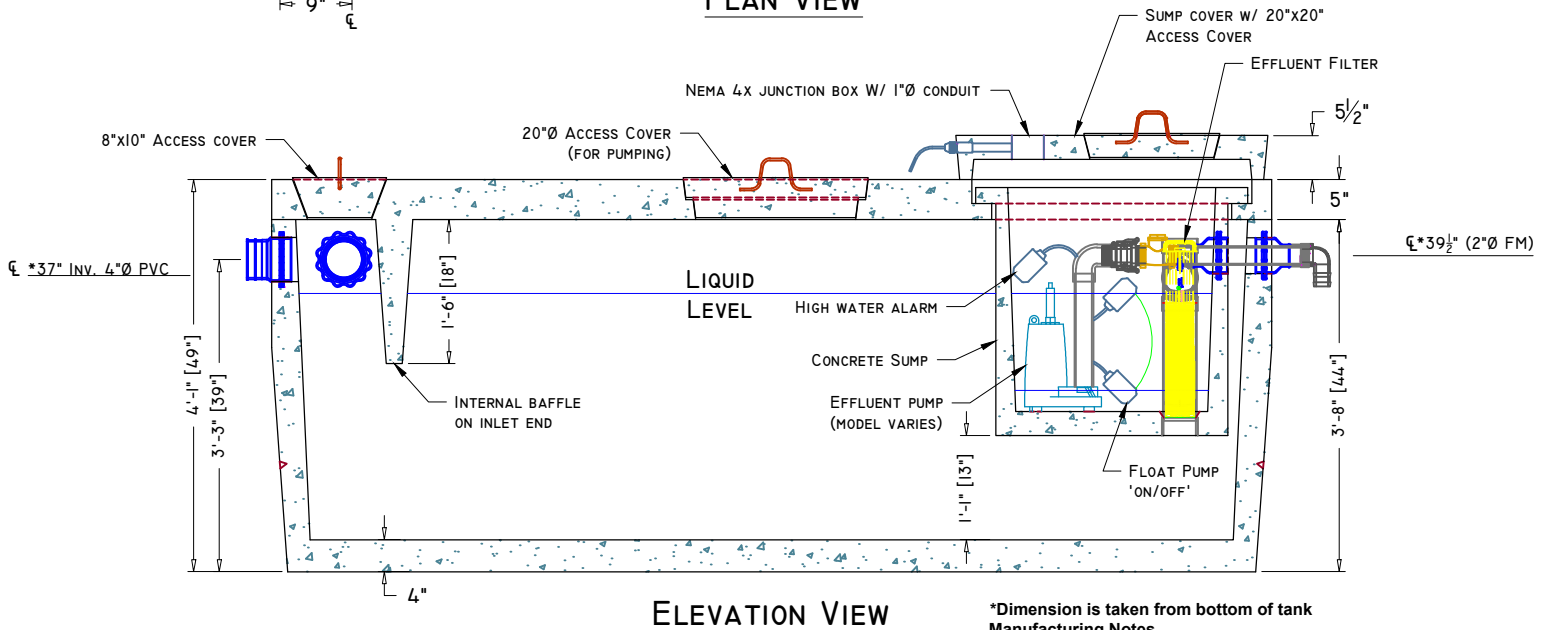
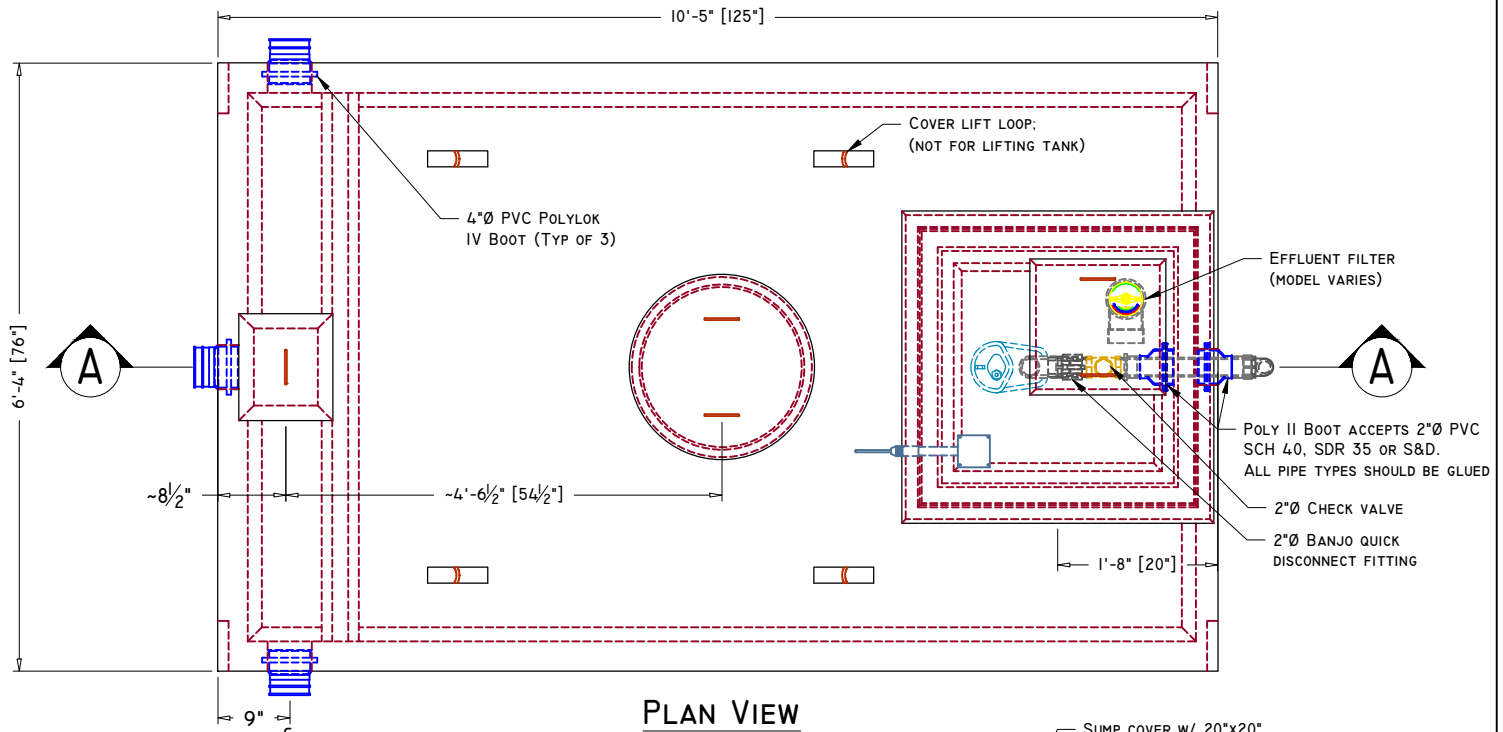




# American Concrete Industries

## 1000 GALLON LOWBOY LIFT STATION

WWW.AMERICANCONCRETE.COM  
 1717 STILLWATER AVE.  
 VEAZIE, ME. 04401  
 TEL: (207) 947-8334  
 FAX: (207) 947-3580



**CONCEPTUAL VIEW**

SCALE: NTS

\*Dimension is taken from bottom of tank

**Manufacturing Notes**

- 1.1. CONCRETE COMPRESSIVE STRENGTH: 4,000PSI @ 28 DAYS
- 1.2. AIR ENTRAINMENT: 4-6%
- 1.3. GRADE 60 REINFORCEMENT
- 1.4. STRUCTURAL FIBER REINFORCED BASE
- 1.5. TANKS SHOULD BE PUMPED EVERY 3-5 YEARS, DEPENDING ON USE
- 1.6. NEVER USE SEPTIC CLEANING AGENTS
- 1.7. DESIGNED FOR PEDESTRIAN LOAD RATING ONLY
- 1.8. ALL TANK PENETRATIONS ARE INTEGRALLY CAST
- 1.9. ALL JOINTS SEALED W/ BUTYL RUBBER JOINT SEALANT
- 1.10. 'LIFT / PUSH / CORD LENGTH' INFORMATION REQUIRED AT TIME OF ORDERING

**Physical Specifications:**

Cover Weight:	4,060 lbs
Tank Weight:	7,550 lbs
Sump Weight:	795 lbs
Sump Cover Weight:	440 lbs
Total Weight:	12,845 lbs
Available Capacity (Inlet Invert):	1,096 gal (4"Ø PVC)
Working Capacity (Filter Invert):	913 gal (4"Ø PVC)
Max Capacity (Interior Top):	1,021 gal