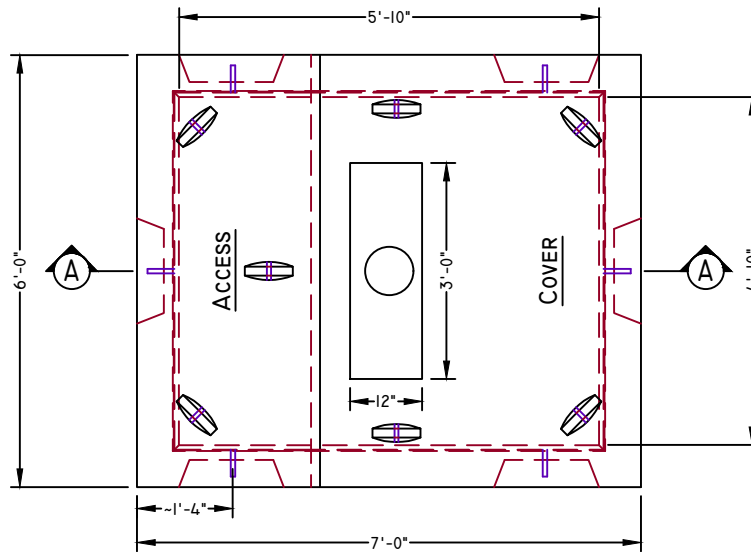




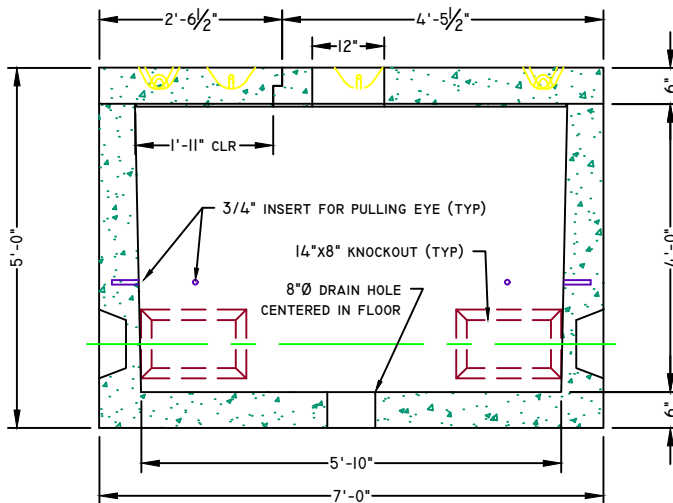
American Concrete Industries

EMERA MAINE 6'X7' SPLIT-TOP TRANSFORMER PAD
(75-300KVA, EMERA #2203.1)

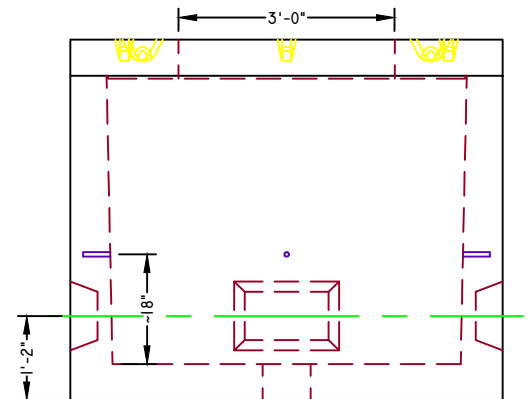
WWW.AMERICANCONCRETE.COM
1717 STILLWATER AVE.
VEAZIE, ME. 04401
TEL: (207) 947-8334
FAX: (207) 947-3580



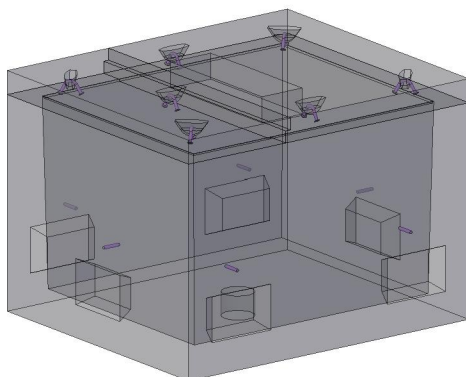
PLAN VIEW



SECTION A-A



SIDE VIEW



CONCEPTUAL VIEW

SCALE: NTS

*Some details not shown for clarity

Manufacturing Notes

- 1.1. CONCRETE COMPRESSIVE STRENGTH: 5000PSI @ 28 DAYS
- 1.2. AIR ENTRAINMENT: 4-6%
- 1.3. GRADE 60 REINFORCEMENT
- 1.4. PULLING EYES \approx 4.5" ϵ ABOVE KNOCKOUTS (TYPICAL)
- 1.5. SEALANT AROUND BASE OF ACCESS / COVER NOT PERMITTED
- 1.6. KNOCKOUTS LOCATED UNDER ACCESS TO BE USED FOR PRIMARY CONDUCTORS ONLY

Physical Specifications:

Access Weight: 1,164 lbs
Cover Weight: 1,903 lbs
Base Weight: 10,506 lbs
Total Weight: 13,573 lbs