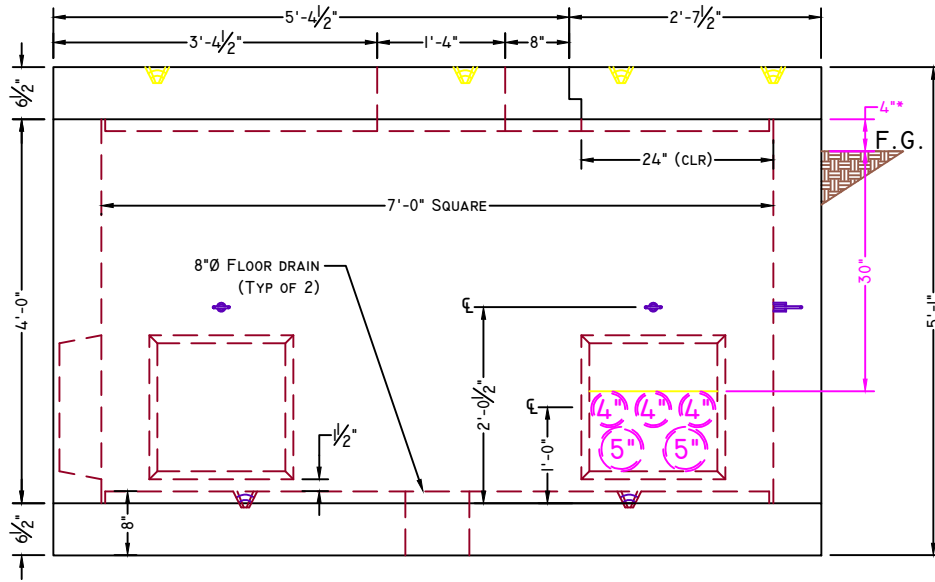




American Concrete Industries

1717 Stillwater Ave. Veazie, ME. 04401

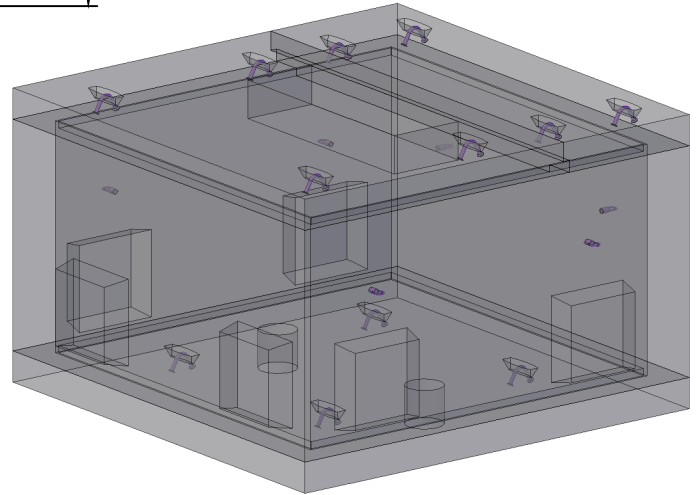
www.americanconcrete.com



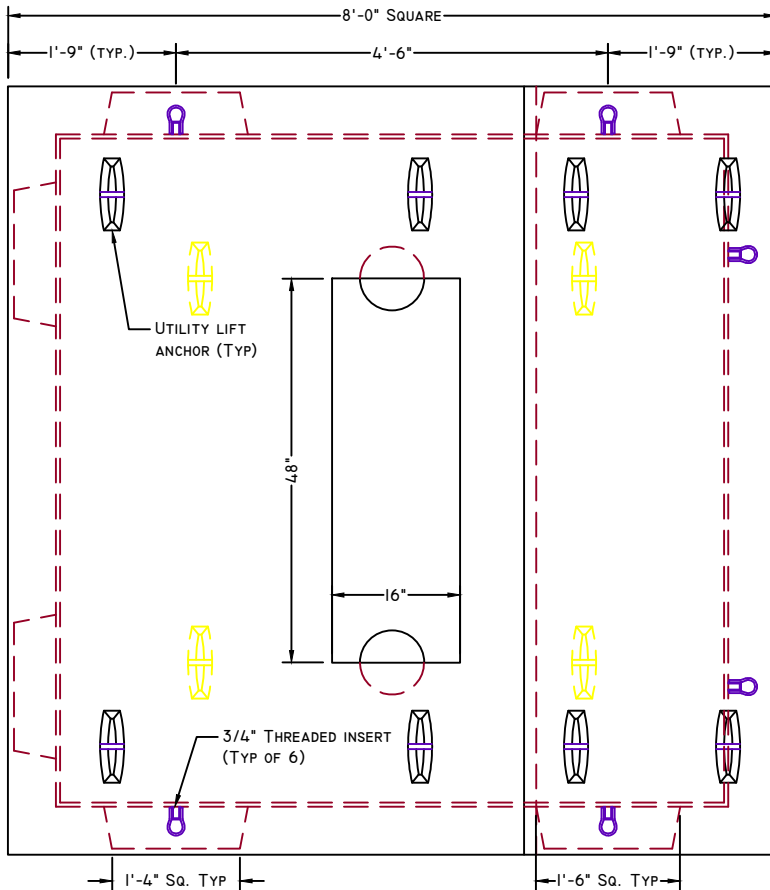
*GRADE RECOMMENDED PER EMERA MAINE, TO PREVENT WATER INFILTRATION

NOTE:
CONDUIT DEPTH 30" PER NEC
CONDUIT DEPTH 36" ON MDOT PROJECTS,
THIS MAY REQUIRE A CUSTOM HEIGHT VAULT

ELEVATION VIEW



CONCEPTUAL VIEW - NTS



PLAN VIEW

*Dimension is taken from bottom of tank

Manufacturing Notes

- 1.1. CONCRETE COMPRESSIVE STRENGTH: 5000PSI @ 28 DAYS
- 1.2. AIR ENTRAINMENT: 4-6%
- 1.3. GRADE 60 REINFORCEMENT
- 1.4. DESIGNED FOR 300PSF LOADING
- 1.5. CONTRACTOR TO SUPPLY TRANSFORMER/CABINET LOADING SPECIFICATIONS
- 1.6. THREADED INSERTS FOR PULLING EYES TO BE $\sim 3\frac{1}{2}$ " ABOVE KNOCKOUTS
- 1.7. OPENINGS BELOW REMOVABLE COVER FOR PRIMARY ONLY

Physical Specifications:

Base Slab Weight:	6,018 lbs
Barrel Weight:	8,209 lbs
Top Slab (Access Side) Weight:	1,920 lbs
Top Slab (T-Pad Side) Weight:	3,625 lbs

8'x8' 3-PHASE (500-750KVA) TRANSFORMER PAD

ACI CATALOG DRAWINGS

ITEM#: 321020

DRAWN DATE: 06/08/2015

REVISION #: 0.01

SCALE: 1/2" = 1'-0" UNLESS OTHERWISE NOTED

REVISION DATE: 5/7/2020