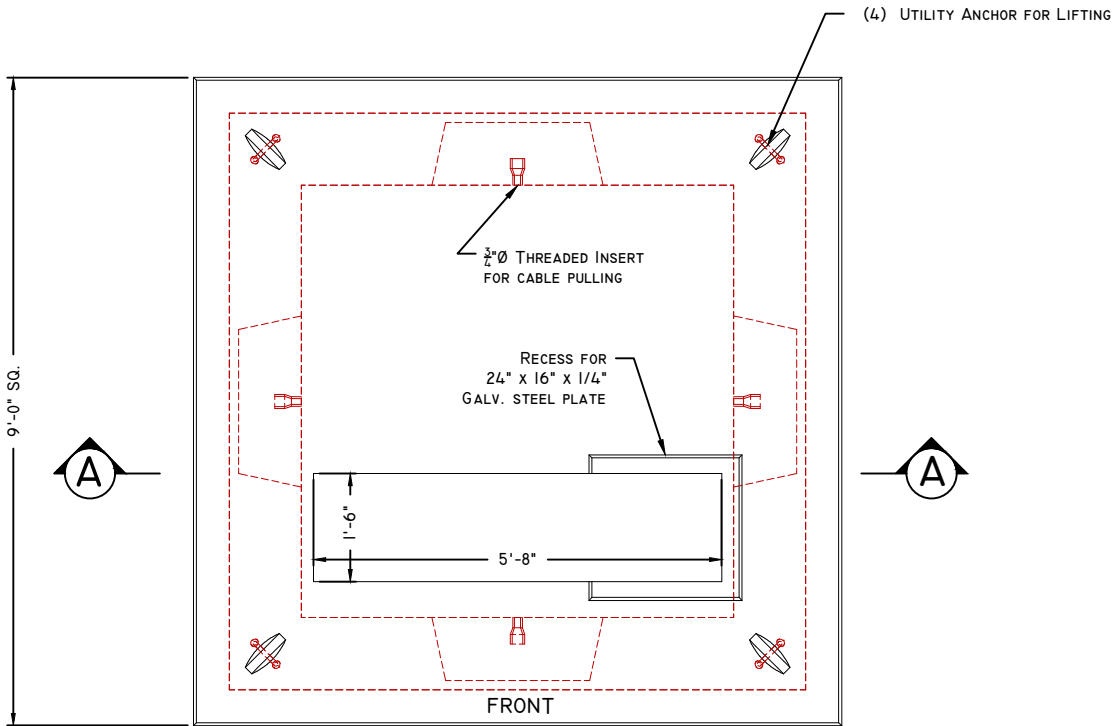
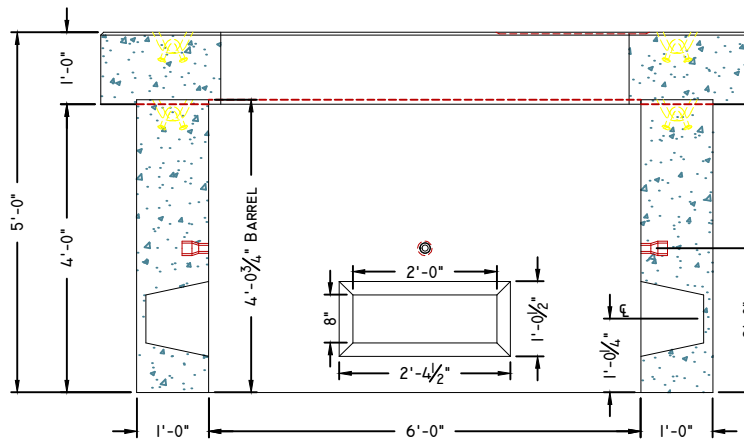




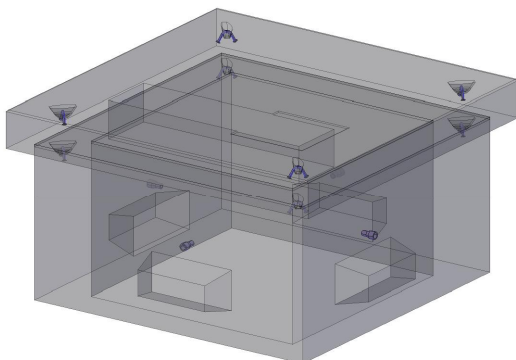
3 PHASE 9' x 9' TRANSFORMER PAD



PLAN VIEW



SECTION A-A



CONCEPTUAL VIEW

1. Site Preparation Notes:

- 1.1. PAD SHALL BE SET ON A PROPERLY PREPARED GRAVEL BASE AND ORIENTED SO THE FRONT* OF THE TRANSFORMER HAS TRUCK ACCESS, AND IS PROTECTED FROM TRAFFIC.
- 1.2. FINISHED GRADE SHALL BE PREPARED IN SUCH A WAY AS TO SHED WATER AWAY FROM THE PAD

2. Manufacturing Notes:

- 2.1. CONCRETE COMPRESSIVE STRENGTH: 4,000PSI @ 28 DAYS
- 2.2. AIR ENTRAINMENT: 4%-6%
- 2.3. GRADE 60 REINFORCEMENT
- 2.4. 3/4" \varnothing NATIONAL COURSE THREADED INSERTS CAST-IN AS SHOWN FOR PULLING EYES

3. Physical Specifications:

- 3.1. Cover Weight (#321600): 10,717 lbs
- 3.2. Base Weight (#321580): 15,605 lbs
- 3.3. Total Weight: 26,322 lbs

*FRONT DENOTES THE SIDE ON WHICH THE ACCESS DOORS ARE LOCATED.