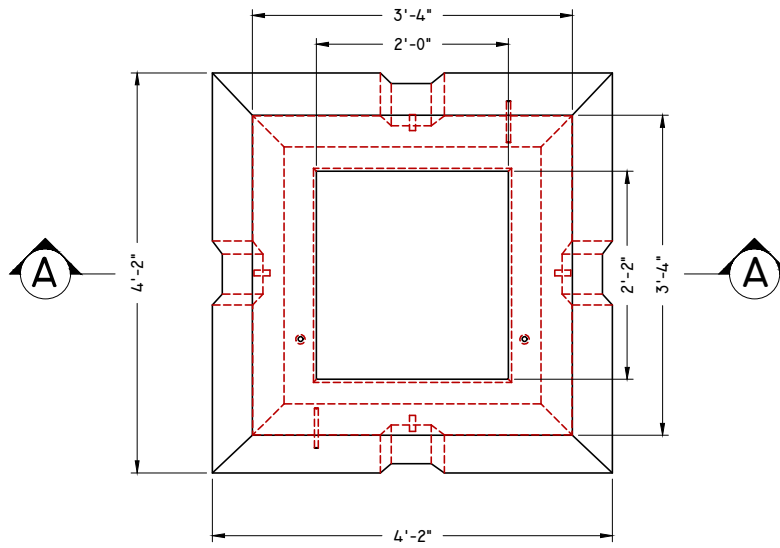




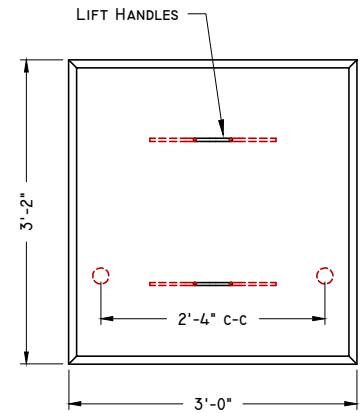
# American Concrete Industries

## CMP I-PHASE TRANSFORMER PADMOUNT

WWW.AMERICANCONCRETE.COM  
 1717 STILLWATER AVE.  
 VEAZIE, ME. 04401  
 TEL: (207) 947-8334  
 FAX: (207) 947-3580



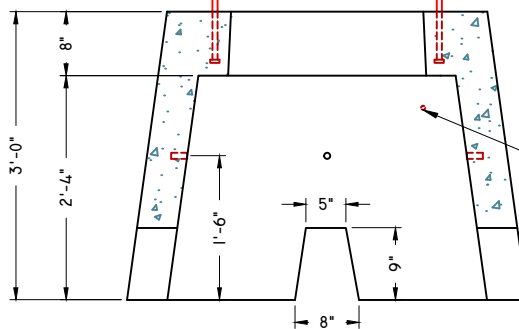
**PLAN VIEW**



**'COVER' PLAN VIEW**

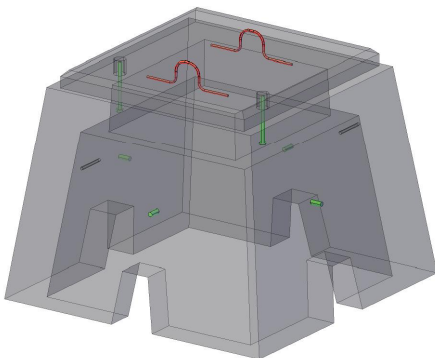
COVER (#321480) SOLD SEPARATELY

(2)  $\frac{3}{8}$ "  $\varnothing$  X 8" BOLTS



$\frac{1}{2}$ "  $\varnothing$  HOLE FOR GROUND WIRE  
(TYP. OPPOSITE SIDE)

**SECTION A-A**



**CONCEPTUAL VIEW**

**1. Site Preparation Notes:**

- 1.1. PAD SHALL BE SET ON A PROPERLY PREPARED <1" GRAVEL OR CRUSH STONE BASE
- 1.2. FINISHED GRADE SHALL BE PREPARED IN SUCH A WAY AS TO SHED WATER AWAY FROM THE PAD

**2. Manufacturing Notes:**

- 2.1. CONCRETE COMPRESSIVE STRENGTH: 4,000PSI @ 28 DAYS
- 2.2. AIR ENTRAINMENT: 4%-6%
- 2.3. GRADE 60 REINFORCEMENT
- 2.4.  $\frac{3}{4}$ "  $\varnothing$  NATIONAL COURSE THREADED INSERTS AS SHOWN FOR PULLING EYES

**3. Physical Specifications:**

- |                              |           |
|------------------------------|-----------|
| 3.1. Cover Weight (#321480): | 349 lbs   |
| 3.2. Base Weight (#321640):  | 2,640 lbs |
| 3.3. Total Weight:           | 2,989 lbs |